



1 true health
CARE MANAGEMENT

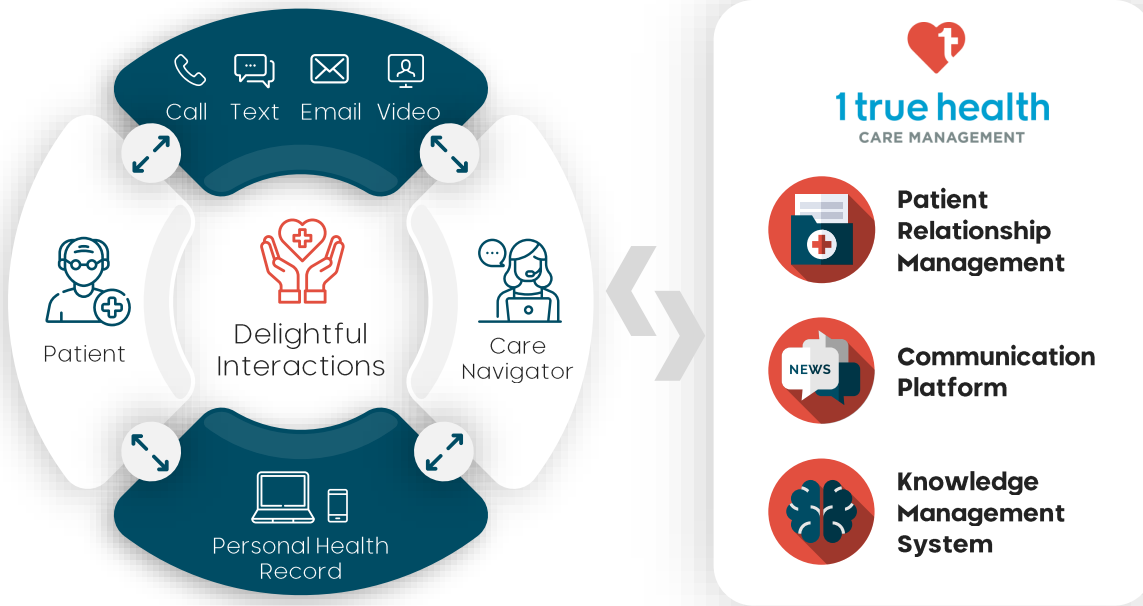
Effortless chronic disease management through virtual care navigators and intelligent software.

Over \$3T spent annually on chronic disease management

Yet, for the 43 million Americans on Medicare with two or more chronic diseases, actually managing them is a pain. Ineffective checkups, poor coordination, limited patient education, and even medication errors contribute to patient and caretaker headaches.

1 True Health: Effortless chronic disease management

Patients receive a dedicated Care Navigator who uses our intelligent software to create an accurate historical record and Care Plan. Navigators then manage the efforts of providers and caretakers while leading ongoing, impactful conversations.



With MVP development complete, 1TH has begun Chronic Care Management with an initial patient cohort

Chronic Care Management and Remote Patient Monitoring represents a \$310m addressable market in Austin alone. 1TH's MVP platform and staff are able to serve up to 200 patients, 24/7 today.

Raising \$1.5m to expand within Austin, TX

Founded by dedicated medical professionals and technology experts, 1TH is ready to go into full-on growth mode, focusing initially on the Austin and central Texas markets.

\$1.3 T/yr
Spent managing:

- Diabetes
- Cognitive
- Cancer
- Arthritis
- Cardio
- Obesity



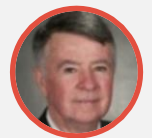
Shawn Smith
CEO & Co-founder

30+ years in healthcare corporate ops, sales, marketing, and biz dev



Charles Owen, MD
CMO & Co-founder

40+ years in Emergency Medicine and 30+ years in medical informatics and multiple successful exits



Jerry Scott
Exec Advisor & Co-founder

Founder of multiple Healthcare IT companies w/ successful exits